

APRIL-JUNE 2024



CU HAWAII
Federal Credit Union

MORE POSSIBILITIES

NEWSLETTER



FEATURED IN THIS NEWSLETTER

Community Service & Outreach
2024 Scholarship Recipients
2023 Impact Report

Member Appreciation Day
Social Media Giveaways
Business Member Spotlight

Sweetheart Scam
Upcoming Holidays
Board of Directors

 (808)933-6700

 info@cuhawaii.com

 cuhawaii.com



COMMUNITY SERVICE & OUTREACH

Ka'ū Coffee Festival

The Ka'ū Coffee Festival is an annual celebration that features a variety of events showcasing the culture, heritage and beauty of Ka'ū. It promotes the Ka'ū Coffee Brand and supports the development of education, agriculture, and the nature tourism in the region ☕ We had a spin wheel, giveaway, and handed out CU Hawaii swag 🍷



Two lucky winners of our Ka'ū Coffee Festival giveaway.



OUR STAFF ASSISTING KEIKI

KKP Summer Slide

The KKP Summer Slide is an event focused on reading and math literacy for elementary and intermediate students. We played a "Write A Check" game with keiki, where they added up a grocery list and cut a check for the amount 📄 🛒 Keiki also got to enjoy waterslides, beach sports, arts, and crafts 🎨



SPIN WHEEL & CU HAWAII SWAG

	CU HAWAII Federal Credit Union MORE POSSIBILITIES	Date _____	1001
Pay to the Order of _____		_____ DOLLARS	
Memo _____		_____ AUTHORIZED SIGNATURE	
:001001: :321378709: :0000000000:			

Our practice CU Hawaii check that keiki used to pay for their groceries in our "Write A Check" game.



COMMUNITY SERVICE & OUTREACH

Financial Reality Fair

We put together a Financial Reality Fair at Kea'au High School. We were able to provide a real world financial experience for their students!



OUR AMAZING VOLUNTEERS



Some Kea'au High School Students attending and reflecting on our reality fair. Featuring our CU Hawaii sunglasses!



GRAND OPENING

Kea'au Student Branch

In April we had the grand opening of our CU Hawaii Kea'au Student Branch. The branch is open to all Kea'au High School students and faculty, making it convenient for them to access their account and possibly learn more about financial literacy.



Left photo: The grand opening ceremony of our Kea'au Student Branch, where we did a ribbon cutting. Right photo: Our team celebrating the student branch grand opening.



We are proud to announce our 2024 SCHOLARSHIP RECIPIENTS

We awarded \$25,000 in scholarships!
Providing students with MORE Possibilities for their future!

Check out our social media for highlights on each student. Congratulations to them all!

@cuhawaii @cuhawaiiifcu

COLLEGE STUDENTS RECEIVED \$2,000

HIGH SCHOOL STUDENTS RECEIVED \$2,500



COLBY LEE

University of Hawai'i at Hilo



KAYELA WONG

University of Hawai'i at Mānoa



CHEYDON NALEIMAILE-EVANGELISTA

Waiākea High School



KENNEDY MONIZ

Waiākea High School



JAEDA YAMASAKI

Seattle Pacific University



LUCHE ANGELINE GANOT

University of Hawai'i at Hilo



LINDSEY NICOLE JULIAN

Pāhoa High School



VINNERIE CONNER

Kea'au High School



TEHYA THOME

Grand Canyon University



XIAOSHUN "MARIA" SUN

Kea'au High School



JOSHUA RAMO

Kea'au High School



2023 IMPACT REPORT (JUNE-DECEMBER)

Community Events



Engaging with



Community members

With the help of



CU Hawaii staff & volunteers

Financial Literacy Education (FLE)



Engaging with



Community members

Educating



Students

Engaged with



UHH Students



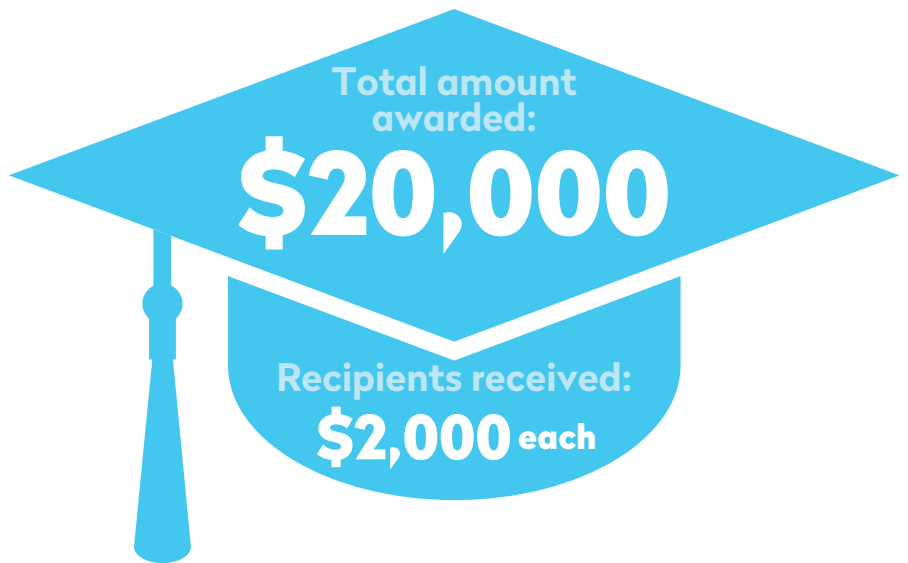
2023 IMPACT REPORT (JUNE-DECEMBER)

Community Giveback



2023 Scholarships

Recipients: 8 graduating high school students and 2 undergraduates



Milestones



Sponsored & participated in the 1st Annual **KKP Summer Slide Events** (July)

Made Platinum team and raised \$7,739 for **Relay for Life** (July)

Celebrated Waiākea High Schools Branches 20th Anniversary (December 12)



MEMBER APPRECIATION DAY



We are thankful each and every day for our members and community, but are especially excited when we get the chance to celebrate them💙

In April, we celebrated our members💗 Members won weekly prize giveaways, cash, and received a special gift for visiting us on Member Appreciation Day!



WE APPRECIATE ALL OF YOU!




Thank you to all of our members who celebrated with us!




SOCIAL MEDIA GIVEAWAYS

Member Appreciation Giveaway

CU Hawaii members entered on social media for a chance to win our new exclusive CU Hawaii beach essentials 



Mother's Day Giveaway

Members nominated a deserving mom to win a CU Hawaii tote bag filled with goodies 




Father's Day Giveaway

CU Hawaii members entered on social media for a chance to win the perfect gift for Father's Day!





BUSINESS MEMBER SPOTLIGHT

Showcasing some of our crafty business members who participated in this years Merrie Monarch Festivals craft fairs 

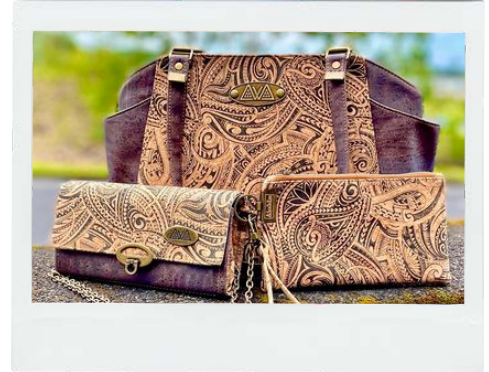


Sew Da Kine

“At Sew Da Kine, we specialize in crafting vegan and sustainable bags from premium cork fabric in our cozy studio located on the east side of Hawaii Island.”

FOLLOW HER ON SOCIAL MEDIA!

@SEWDAKINE

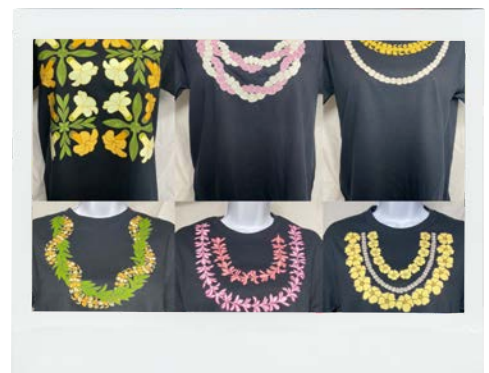


Triple J Designs LLC

“My business consists of creating various items such as scrunchies, lanyards, key fob keychains, shirts, pouches, and personalized glass cups. I also recently started embroidery.”

FOLLOW HER ON SOCIAL MEDIA!

@TRIPLEJDESIGNSLLC

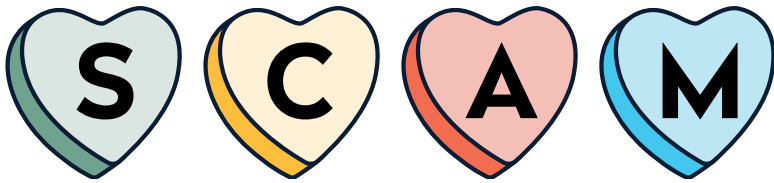


If you are a **Business Member** with CU Hawaii and would like to be featured in our business member spotlight, please send us an email at marketing@cuhawaii.com.

We will showcase you on our social media and newsletters!



Sweetheart



At CU Hawaii we care about your financial safety and we want you to be aware of these types of scams and how to prevent them.

Whenever you are in doubt, please contact us directly at (808)933-6700.

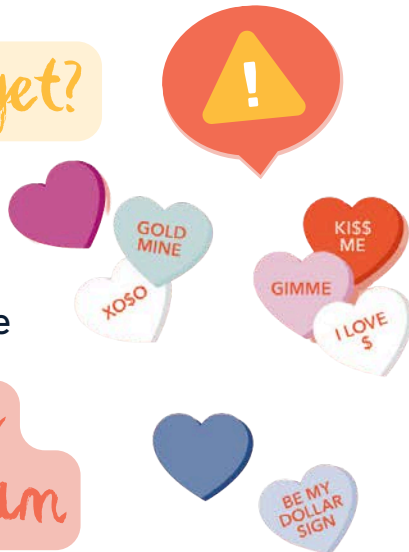
In addition, you should report the fraud by visiting <https://reportfraud.ftc.gov>

What is a Sweetheart Scam?

A **Sweetheart Scam** is also known as a “romance scam” where the scammer uses an online dating app or social media to gain the victim’s trust and affection. The scammer then manipulates the victim into sending money or giving them access to their accounts.

Who do they target?

- Seniors
- Widows
- Recent Divorcees
- Lonely/trusting people



Common clues to tell this is a scam

- Refusing to meet, speak over the phone, or video call
- Asking a lot of questions about you but avoiding questions
- Quickly declaring their love for you very early
- Frequently misspelling words or using improper grammar
- Pressure to continue the relationship but they will always have a reason why they are not able to meet in person

What do they ask for?

- Urgency to send the funds quickly
- Funds to purchase airline tickets
- Telephone or internet fees
- School tuition

Protect yourself

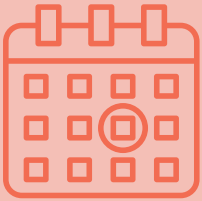
- Don't share your banking information or passwords
- Be suspicious of people and or businesses that want to send you money especially if they want to send the funds using mobile deposit





UPCOMING HOLIDAYS

CU Hawaii will be closed
on the following days;



Labor Day
Monday, September 2nd, 2024

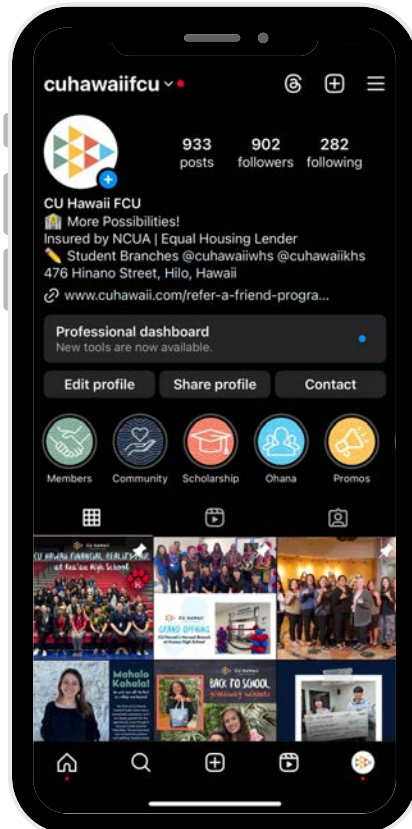
Discoverers' Day
Monday, October 14th, 2024

DON'T FORGET TO FOLLOW US ON SOCIAL MEDIA FOR UPDATES!



@cuhawaiiifcu

@cuhawaii



BOARD OF DIRECTORS



Eric Tanouye
Chairman

Ross Wilson Jr.
Vice Chairman

Francis Tsunozumi
Financial Officer

Ryan Kadota
Secretary

Toby Taniguchi
Director

Takashi Sasaki
Director

Christine Takahashi
Director